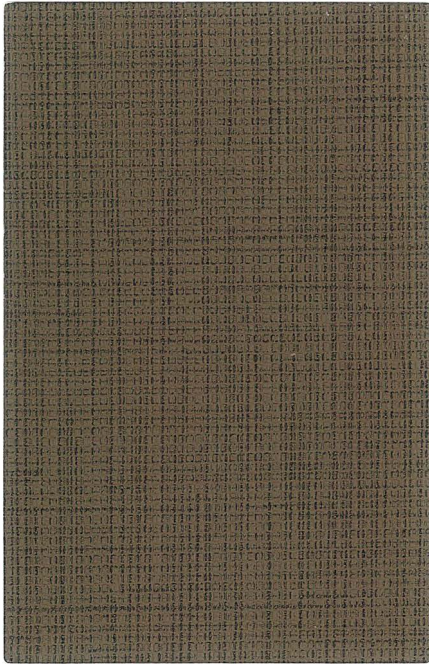
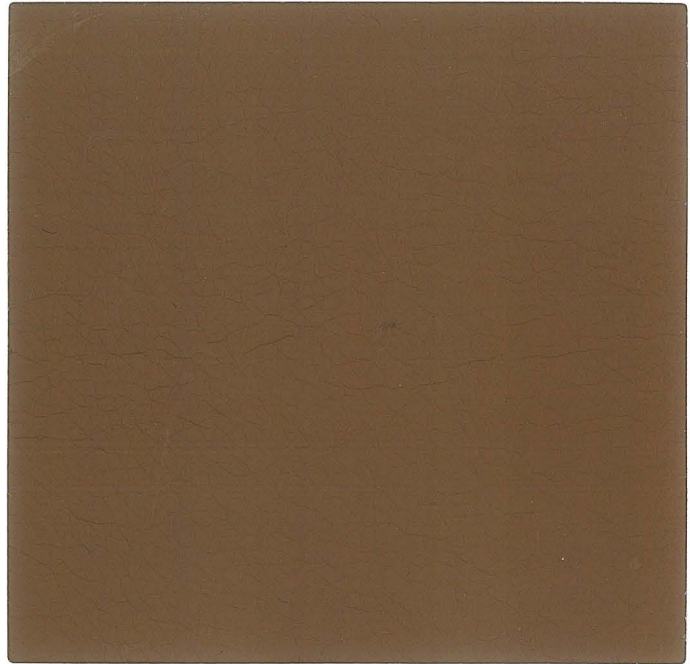


grade 3



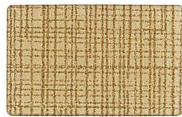
Beeline Portobello



Canter Safari



Canvas



Sisal



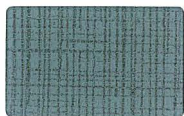
Sand



Quarry



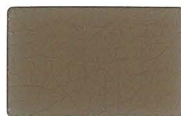
Saddle



Nimbus



Sprout



Earth



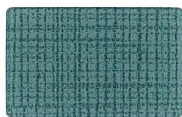
Tango



Ancho



Eucalyptus



Geyser



Alfalfa



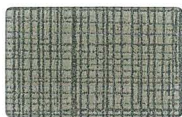
Chestnut



Bordeaux



Cork



Fossil



Willow



Tawny



Mica



Walnut



Forge



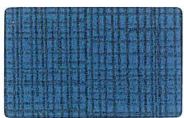
Storm



Ink



Sable



Tidal



Eclipse



Iron



Night



Onyx

Width/Pattern	Grade	Fiber Content & Backing	Finish	Abrasion (D.R.)	Light-fastness	Cleaning Code
54" BEELINE ☞ ☒ ☼ ☹*	3	100% Polyurethane / PVC Free Polyester Backing	Anti-microbial, Antibacterial	500,000	40 Hrs. Class 4.5	W Bleach Cleanable (4:1)
54" CANTER ☞ ☒ ☼ ☹*	3	100% Polyurethane / PVC Free Polyester Backing	Anti-microbial, Antibacterial	240,000	40 Hrs. Class 4.5	W Bleach Cleanable (4:1)

* ACT Registered Trademark

Cleaning code: W - Water-based cleaning agents or foam may be used.

Effective September 2014, supercedes all previous cards.

For full fabric selections visit healthcentric.com
To request samples call 1-866-438-3746
(Dial Ext. 222, 229 or 234 for Customer Service)

health**H**centric
medical grade seating

A division of ergoCentric Seating Systems