



Pivot Back Guest Chairs

Ideal for high traffic areas where repetitive use and cleanability is a priority.

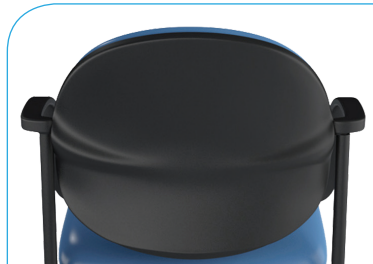
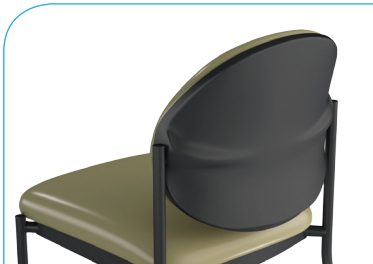
Additional ergonomic comfort for your guests.

Highly durable and cleanable, **healthCentric Pivot Back Guest chairs** provide an affordable solution for healthcare settings and waiting areas. The Pivot Back Guest chair offers a durable steel frame structure, a plastic back cap and a plastic shroud cover under the seat.

The Pivot Back Guest chair is specifically designed to provide a high level of comfort. The back structure allows a pivot motion to provide additional ergonomic comfort. Light weight and versatile, the Pivot Back Guest chair is ideal for high traffic, high volume areas.

Superior Infection Control

Proprietary to healthCentric, IC+™ Upholstery Solution* is a breakthrough technology specially formulated for the healthcare industry. Providing durability where it matters most, IC+ has a superior abrasion rating of 1,000,000 double rubs while guaranteed not to crack, puncture or tear for 10 years.



Features

Backrest

- Dual curve upholstered backrest with plastic back cap
- Pivot motion for additional comfort

Seat

- Dual curve waterfall upholstered seat
- Under-seat plastic shroud cover

Frame

- Durable 14 gauge, 7/8" steel tube frame (black) with metal-to-metal connections for improved cleanability
- Kick back legs for stability with durable custom glides
- Black textured semi-gloss powder coat paint
- Sloped nylon arms (black)

Options

- Floor mounting brackets
- Chrome frame
- Frame colors – black, white, taupe or gray
- CAL 133 / moisture barrier (included in IC+ Upholstery Solution)

Warranty

Lifetime°

- Original purchaser
- Defects and functional failure of materials up to a weight of 280 lbs.

10 Years°

- IC+ against cracking, punctures and tears
- Frame, arms, foam and fabric
- Vinyl, PVC-free (vinyl-like) upholstery (with the exception of Silica)

° Includes labor costs.

* IC+ Upholstery Solution patent pending.

† When used in the quantities and manners specified by the cleaning agents' labeled cleaning instructions.

